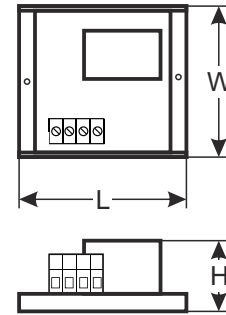
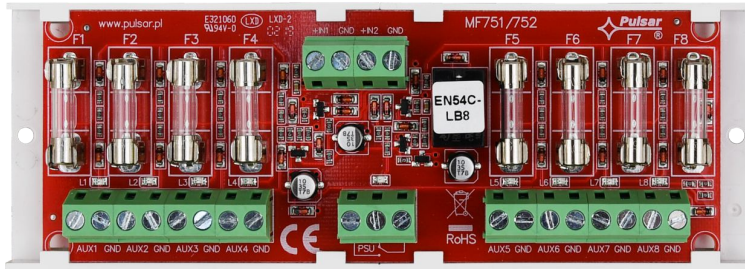


CODE: **EN54C-LB8** v.1.0/1  
 NAME: **EN54C LB8/0,5A/FTA fuse module**

EN



### Features:

- supply voltage 20 ÷ 30 V DC
- eight outputs independently secured with melting fuses
- technical relay output of the PSU indicating fuse activation
- optical indication of failure
- dedicated to fire alarm power supplies of EN54C series
- warranty - 5 years from the production date

### DESCRIPTION

The fuse module is designed for power distribution in the power supply units of EN54C series. It contains two power inputs, IN1 and IN2, connecting to the power supply and eight independently secured outputs AUX1÷AUX8. The IN1 input supplies power to the AUX1 and AUX4 outputs, while the IN2 input supplies power to the AUX5 and AUX8 outputs. Each AUX output has short-circuit protection (SCP) in form of F 0,5 A melting fuse (it is possible to install F1 A fuses - not included). Outputs condition is indicated by L1÷L8 LEDs. Fuse activation is indicated by: turning off the corresponding LED: L1 for AUX1, L2 for AUX2 etc., technical output relay type and PSU LED. PSU technical output can be used for remote control of the parameters, e.g. external optical indication.

|   |  |
|---|--|
| Supply voltage                                | 20 ÷ 30 V DC   |
| Output voltage                                | $U_{AUX} = U_{IN}$ (according to supply voltage )  |
| Current consumption                           | 20 ÷ 30mA @ $U_{in}=20 \div 30$ V DC   |
| Number of power inputs                        | 2 (IN1, IN2)   |
| Number of power outputs                       | 8 (AUX1 ÷ AUX8)  |
| Protection:<br>- Short-circuit protection SCP | 8 x F 0,5 A (it is possible to install F1 A fuses - not included)                        |
| Optical signaling of operation                | L1 ÷ L8 - outputs condition AUX1÷AUX8 (green LEDs)<br>PSU - failure indication (red LED) |
| Fuses F1 ÷ F8                                 | F0,5 A ÷ F1 A  |
| PSU technical output                          | relay: 1 A@ 30 V DC/50 V AC  |
| Operating conditions                          | 2nd environmental class, -10°C ÷ +50°C   |
| Dimensions (LxWxH)                            | 150 x 52,5 x 27 [mm]   |
| Net/gross weight                              | 0,12kg / 0,14kg  |
| Storage temperature                           | -20°C...+60°C  |
| Additional equipment                          | Spacers x 2, glass fuses F0,5 A x 2  |

The overview diagram of the connection between the EN54C-LB8 fuse module and the PSU of the EN54C series.

